

TRACK & RIG INSTALLATION

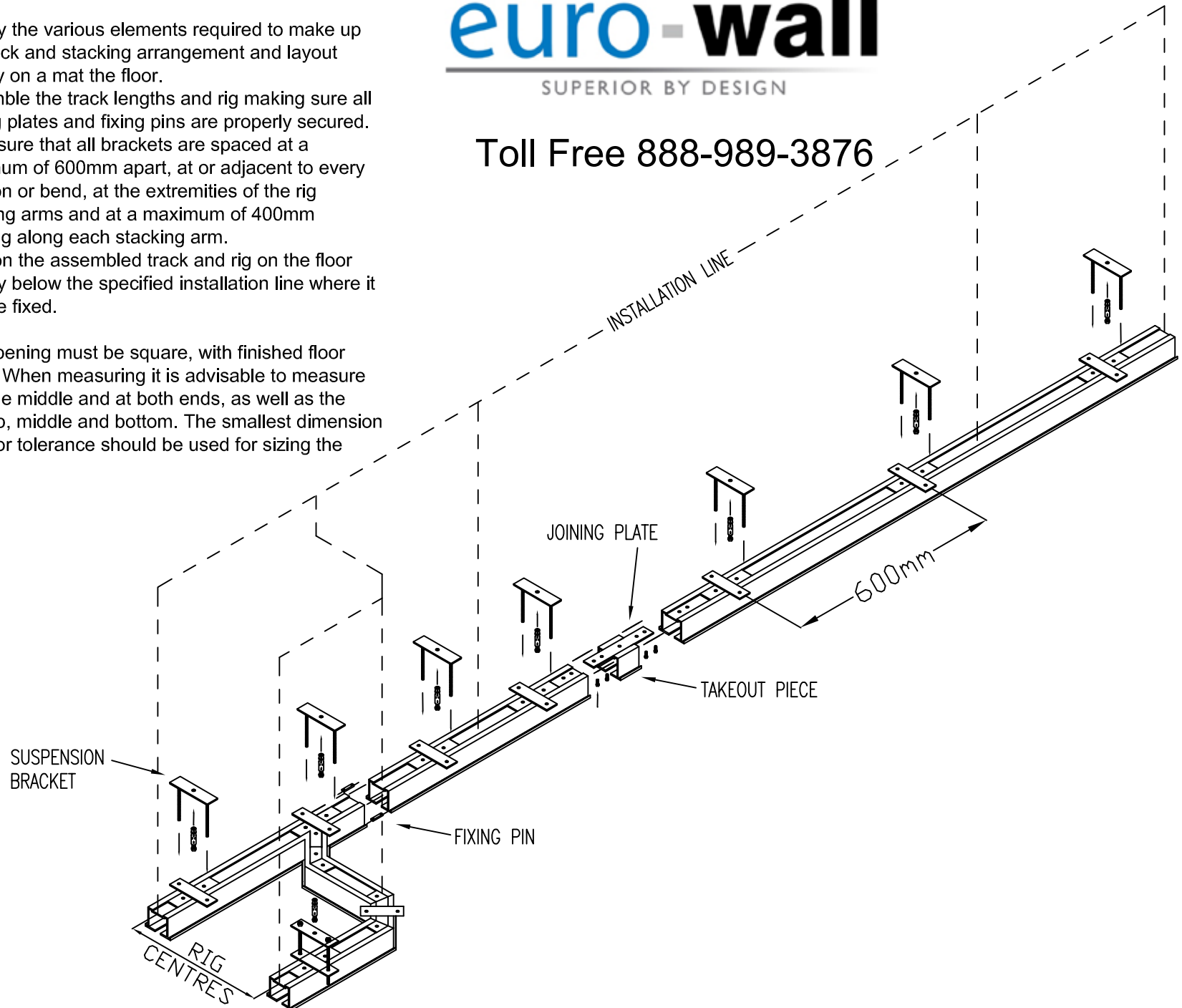
1. Identify the various elements required to make up the track and stacking arrangement and layout loosely on a mat the floor.
2. Assemble the track lengths and rig making sure all joining plates and fixing pins are properly secured.
3. Make sure that all brackets are spaced at a maximum of 600mm apart, at or adjacent to every junction or bend, at the extremities of the rig stacking arms and at a maximum of 400mm spacing along each stacking arm.
4. Position the assembled track and rig on the floor directly below the specified installation line where it is to be fixed.

NOTE: The opening must be square, with finished floor perfectly level. When measuring it is advisable to measure the height in the middle and at both ends, as well as the width at the top, middle and bottom. The smallest dimension minus 10mm for tolerance should be used for sizing the doors.

euro-wall

SUPERIOR BY DESIGN

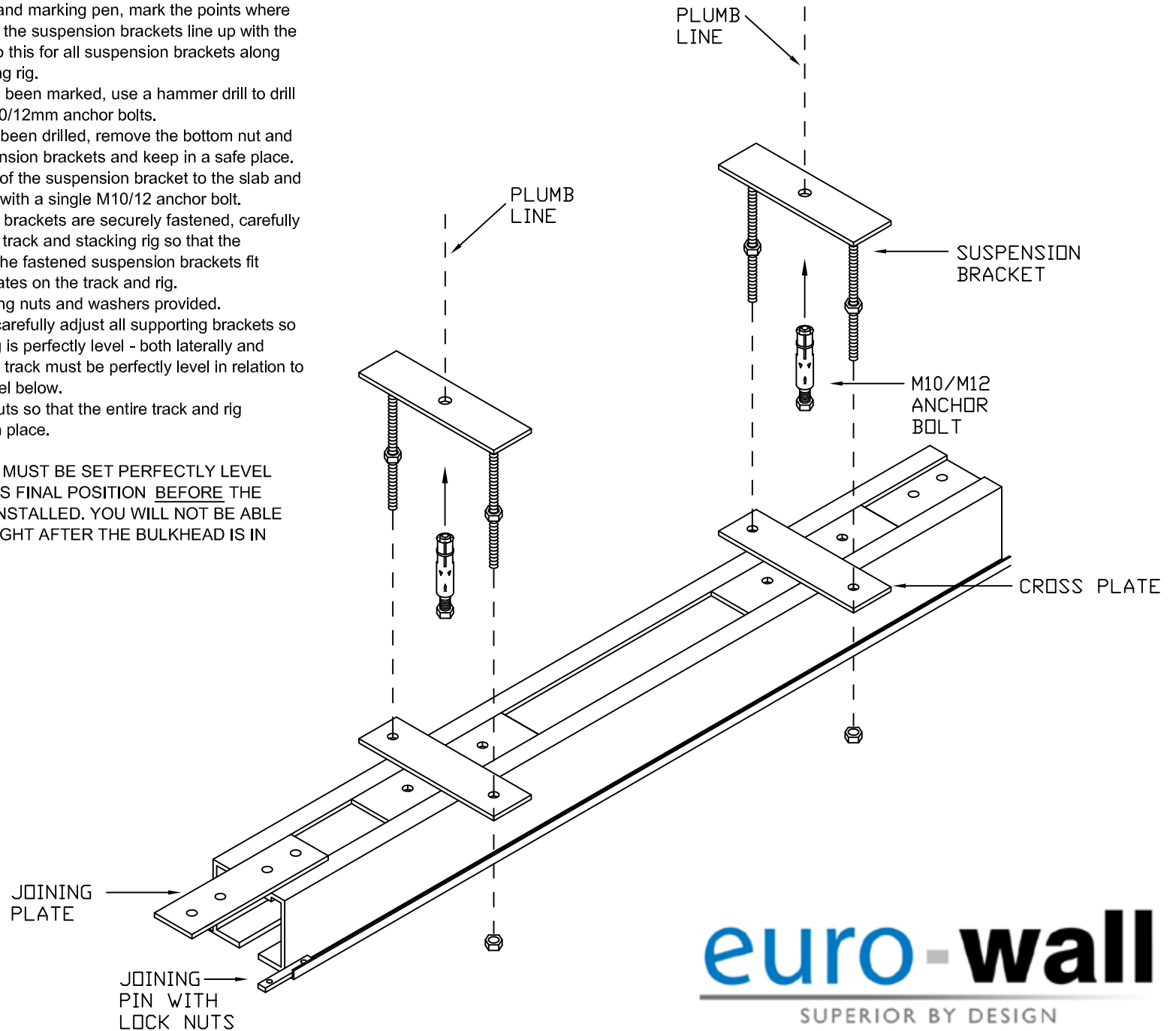
Toll Free 888-989-3876



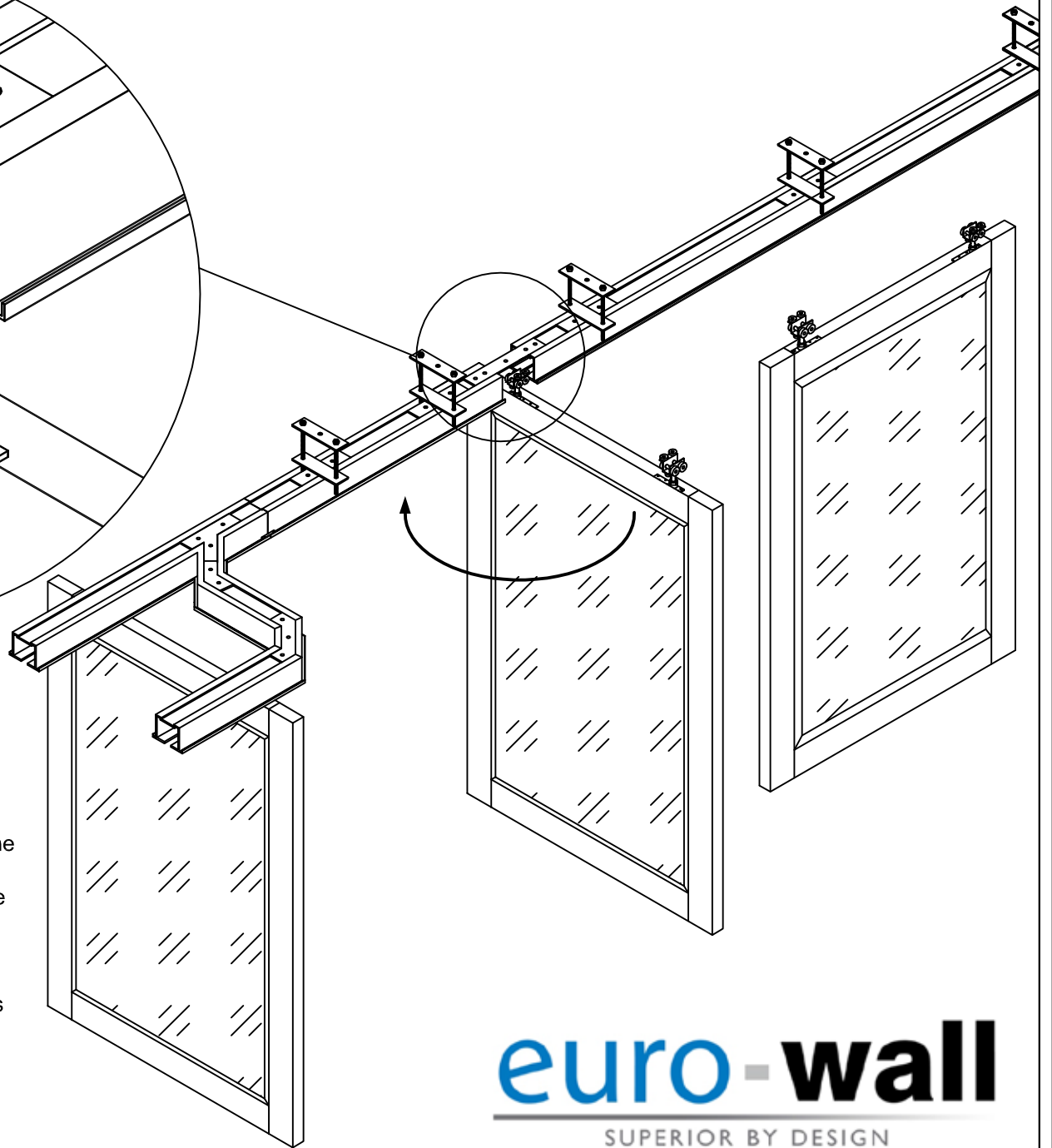
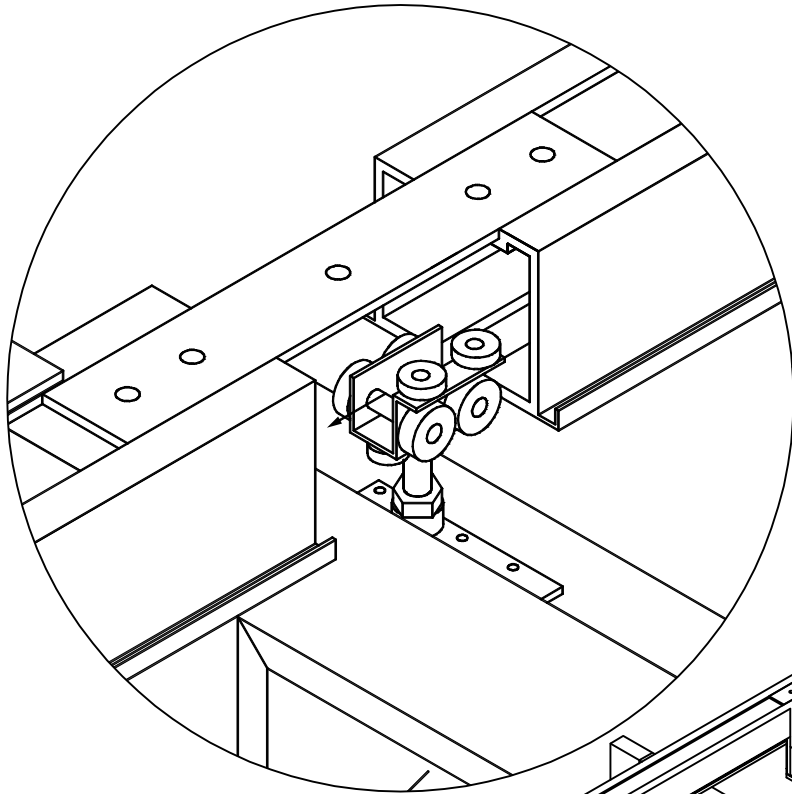
TRACK & RIG INSTALLATION cont...

- Using a plumb bob and marking pen, mark the points where the threaded rods of the suspension brackets line up with the concrete support. Do this for all suspension brackets along the track and stacking rig.
- Once all points have been marked, use a hammer drill to drill holes to suit either 10/12mm anchor bolts.
- Once all holes have been drilled, remove the bottom nut and washers from suspension brackets and keep in a safe place. Position the top half of the suspension bracket to the slab and fix securely in place with a single M10/12 anchor bolt.
- Once all suspension brackets are securely fastened, carefully raise the assembled track and stacking rig so that the threaded rods from the fastened suspension brackets fit through the cross plates on the track and rig.
- Secure the track using nuts and washers provided.
- Using a spirit level, carefully adjust all supporting brackets so that the track and rig is perfectly level - both laterally and along its length. The track must be perfectly level in relation to the finished floor level below.
- Secure all bracket nuts so that the entire track and rig assembly is rigidly in place.

NOTE: THE TRACK AND RIG MUST BE SET PERFECTLY LEVEL AND SECURELY FIXED IN ITS FINAL POSITION BEFORE THE CEILING OR BULKHEAD IS INSTALLED. YOU WILL NOT BE ABLE TO ADJUST THE TRACK HEIGHT AFTER THE BULKHEAD IS IN PLACE.



euro-wall
SUPERIOR BY DESIGN



DOOR INSTALLATION

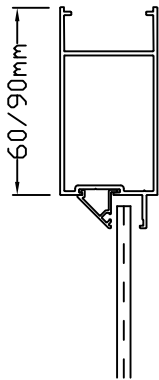
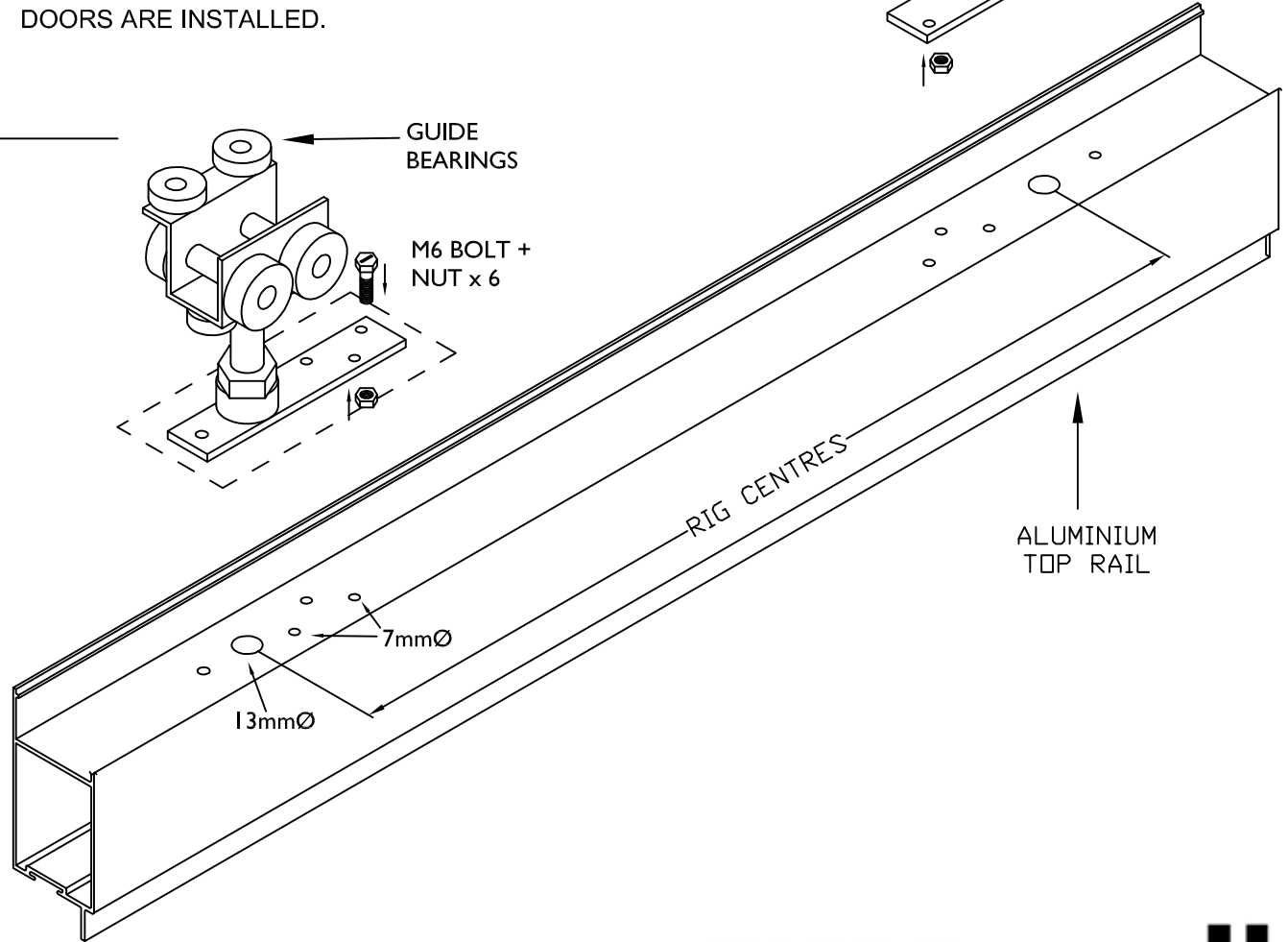
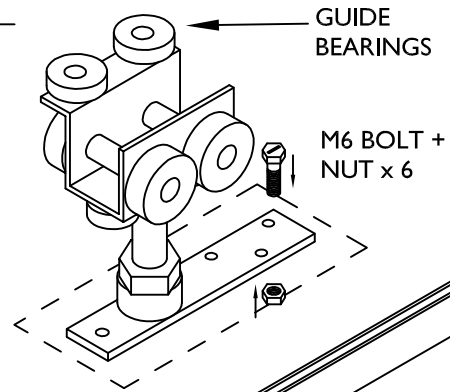
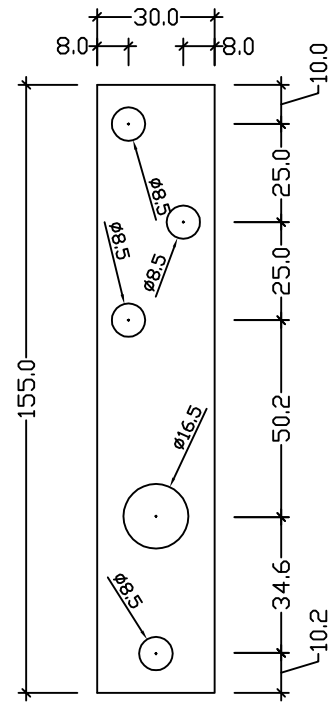
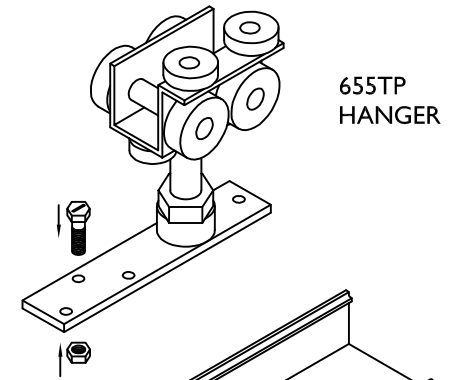
1. Carefully remove takeout piece by loosening securing bolts inside the track.
2. Lift the door and insert the hanger as shown making sure that the guide bearings are facing the correct side. The positions of the guide bearings determine which way the doors enter and exit the rig/parking bay.
3. Rotate the door and insert the second hanger. Once the hanger are in the track, slide the door into the stacking rig to make sure the door stacks correctly.
4. Repeat steps 2 & 3 for each door.
5. Replace takeout piece making sure it is securely fastened

euro-wall
SUPERIOR BY DESIGN

HANGER FIXING

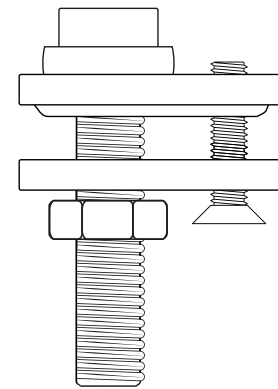
1. Hangers and top plates need to be fixed to the top door rail before fitting and assembling the door stiles.
2. Cut the top rail to the specified width and mark and drill holes according to top plate details (see fig A)
3. Secure hangers to top rail using 6mm bolts and nuts.
4. Hangers must be positioned on the doors at the correct centres as per the manufactured drawing.

NOTE: HEIGHT ADJUSTMENT WILL ONLY BE DONE ONCE THE DOORS ARE INSTALLED.

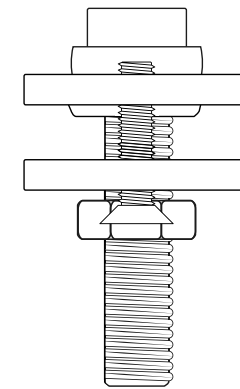


PIVOT INSTALLATION

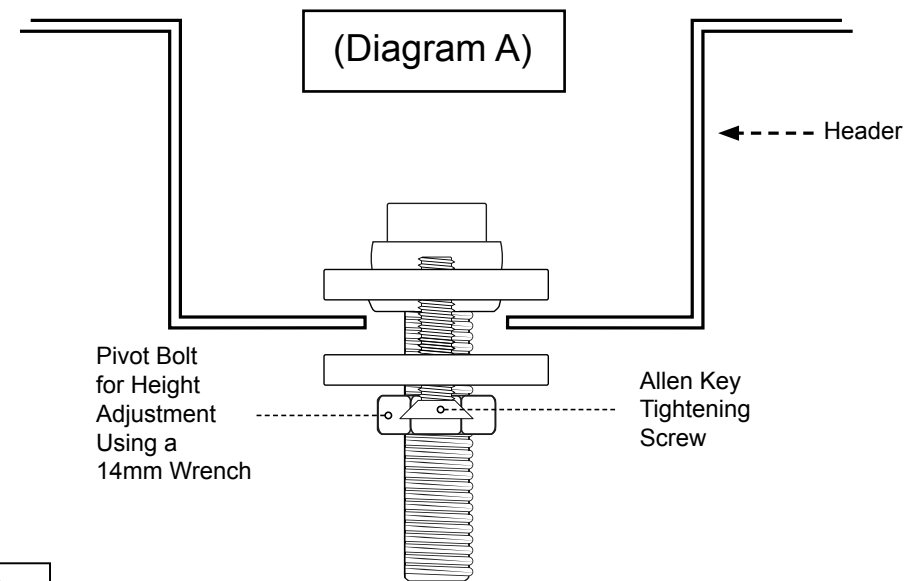
1. Insert the top pivot into header but DO NOT tighten. See Diagram A for top pivot diagram and proper insertion.
2. Place panel into the untightened pivot and position the panel 1/4" away from the opening jamb with a 1/4" spacer (this allows space for the weatherstripping). With the panel positioned 1/4" away from the jamb, mark the location of the top pivot as this will be the correct position for the top pivot.
3. Remove the panel and slide the top pivot to the correctly marked position. Using an allen wrench tighten the top pivot into the marked location.
4. Using a laser or a plumb bob center your bottom pivot plate according to the center of the top pivot bolt. See Diagram B for illustration of the bottom pivot plate.
5. Depending on your substrate secure your centered bottom pivot plate using tapcon / wood screws / self tapping screws. Once the bottom pivot plate is secured, drill a 1/2" hole through the bottom pivot plate and through the substrate below centered with the top pivot bolt. The depth of your 1/2" hole will depend on your specific substrate.
6. With the top and bottom pivots secured in place, position the panel into the pivots starting with the bottom pivot plate first.
7. Now that the panel is secured in position you can adjust the height of the panel by adjusting the flat side of the top pivot bolt using a 1" wrench (See Diagram A)



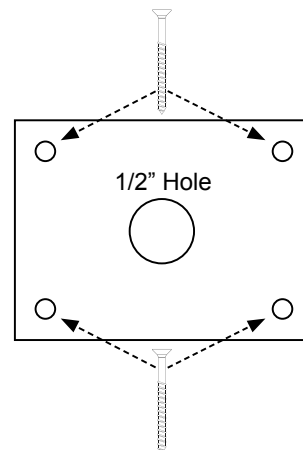
Top Pivot Side View



Top Pivot Front View



(Diagram A)



(Diagram B)