

c:\users\dylanwata\building drops, inc\building drops landing - common\projects\euro-wall, llc\Fbc-24-0531 - fbc submittal - multi directional panel revision - 127023 euro c5 folding door system\dwg\27023.2\ews008.dwg 6/11/2024 9:00 AM

# EURO-WALL, LLC

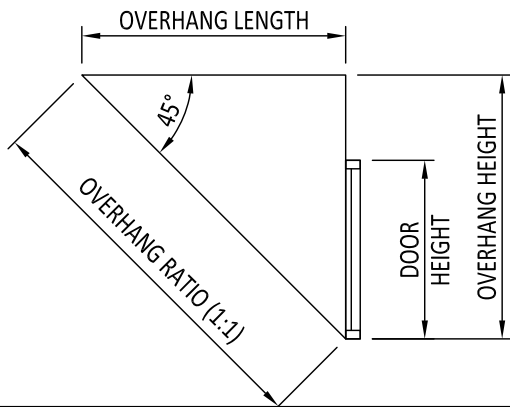
## EURO C5 OUT FOLDING DOOR SYSTEM

### (NON-HVHZ) (NON-IMPACT)

#### GENERAL NOTES:

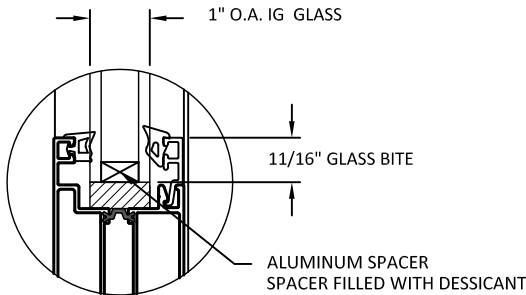
- THE PRODUCT SHOWN HEREIN IS DESIGNED AND MANUFACTURED TO COMPLY WITH THE CURRENT FLORIDA BUILDING CODE (FBC), **EXCLUDING** HVHZ AND HAS BEEN EVALUATED ACCORDING TO THE FOLLOWING:
  - ASTM E283-04(12)
  - ASTM E330-14
  - ASTM E547-00
  - AAMA 1304-02
- ADEQUACY OF THE EXISTING STRUCTURAL CONCRETE/MASONRY, 2X AND METAL STUD FRAMING AS A MAIN WIND FORCE RESISTING SYSTEM CAPABLE OF WITHSTANDING AND TRANSFERRING APPLIED PRODUCT LOADS TO THE FOUNDATION IS THE RESPONSIBILITY OF THE ENGINEER OR ARCHITECT OF RECORD FOR THE PROJECT OF INSTALLATION.
- 1X AND 2X BUCKS (WHEN USED) SHALL BE DESIGNED AND ANCHORED TO PROPERLY TRANSFER ALL LOADS TO THE STRUCTURE. BUCK DESIGN AND INSTALLATION IS THE RESPONSIBILITY OF THE ENGINEER OR ARCHITECT OF RECORD FOR THE PROJECT OF INSTALLATION.
- THE INSTALLATION DETAILS DESCRIBED HEREIN ARE GENERIC AND MAY NOT REFLECT ACTUAL CONDITIONS FOR A SPECIFIC SITE. IF SITE CONDITIONS CAUSE INSTALLATION TO DEVIATE FROM THE REQUIREMENTS DETAILED HEREIN, A LICENSED ENGINEER OR ARCHITECT SHALL PREPARE SITE SPECIFIC DOCUMENTS FOR USE WITH THIS DOCUMENT.
- APPROVED IMPACT PROTECTIVE SYSTEM IS **REQUIRED** TO PROTECT THIS PRODUCT IN AREAS REQUIRING IMPACT RESISTANCE.
- DOOR FRAME MATERIAL: *EXTRUDED ALUMINUM (6063-T5)*.
- GLASS MEETS THE REQUIREMENTS OF ASTM E1300 GLASS CHARTS. SEE SHEET 1 FOR GLAZING DETAIL.
- DOORS SHALL USE SERIES EURO-C5 CARRIES, HINGES, PIVOTS, TWIN POINTS AND LEVER LOCKSET AND SERIES EURO-DSD MULTI-POINT DOOR LOCKS PER MANUFACTURERS REQUIREMENTS FOR EACH CONFIGURATION.

NOTE: WHEN INSTALLED AT A LOCATION PROTECTED BY AN OVERHANG SUCH THAT:  
OVERHANG (OH) RATIO = OH LENGTH ÷ OH HEIGHT IS  $\geq 1.0$ ,  
WATER INFILTRATION REQUIREMENT DOES NOT NEED TO BE MET



| TABLE OF CONTENTS |   |
|-------------------|---|
| SHEET             | SHEET DESCRIPTION                             |
| 1                 | GENERAL NOTES & GLAZING DETAIL                |
| 2                 | ELEVATION UNIT 1                              |
| 3                 | ELEVATION UNIT 2                              |
| 4                 | DESIGN PRESSURE TABLE                         |
| 5                 | ANCHOR LAYOUT                                 |
| 6                 | VERTICAL SECTIONS                             |
| 7                 | HORIZONTAL SECTIONS                           |
| 8                 | INSTALLATION NOTES, ANCHOR DETAILS & SCHEDULE |

| DESIGN PRESSURE RATING                   |                 |                 |                       |
|--|-----------------|-----------------|-----------------------|
| PANEL SIZE                               | CONFIGURATION   | DESIGN PRESSURE | MISSILE IMPACT RATING |
| SEE SHEET 4                              | SEE SHEET 2 & 3 | SEE SHEET 4     | NON-IMPACT            |
| SEE SHEET 4 FOR WATER RATING INFORMATION |                 |                 |                       |



#### GLAZING DETAIL 1

- NOTE:
- ALL GLAZING CONFIGURATIONS SHALL COMPLY WITH SAFETY GLAZING REQUIREMENTS OUTLINED IN CURRENT FBC AND ASTM E 1300 GLASS CHART REQUIREMENTS.
  - SETTING BLOCK SHOULD BE 70-90 DUROMETER AS PER CH 24 OF THE CURRENT FBC.
  - GLASS LITES THAT EXCEED 36" IN WIDTH SHALL USE SETTING BLOCKS AT  $\frac{1}{4}$  SPAN FROM CORNERS.



EURO-WALL, LLC  
P.O. BOX 8007  
NORTH PORT, FL 34290  
PH: 888-989-3876

TITLE:  
EURO C5 OUT FOLDING DOOR SYSTEM  
(NON-HVHZ) (NON-IMPACT)

GENERAL AND GLAZING DETAILS

PREPARED BY:

BUILDING DROPS, INC.

1900 NE MIAMI COURT, STE. 2-15

MIAMI, FL 33132

PH: (954)399-8478

FAX: (954)744-4738

WEB: www.buildingdrops.com



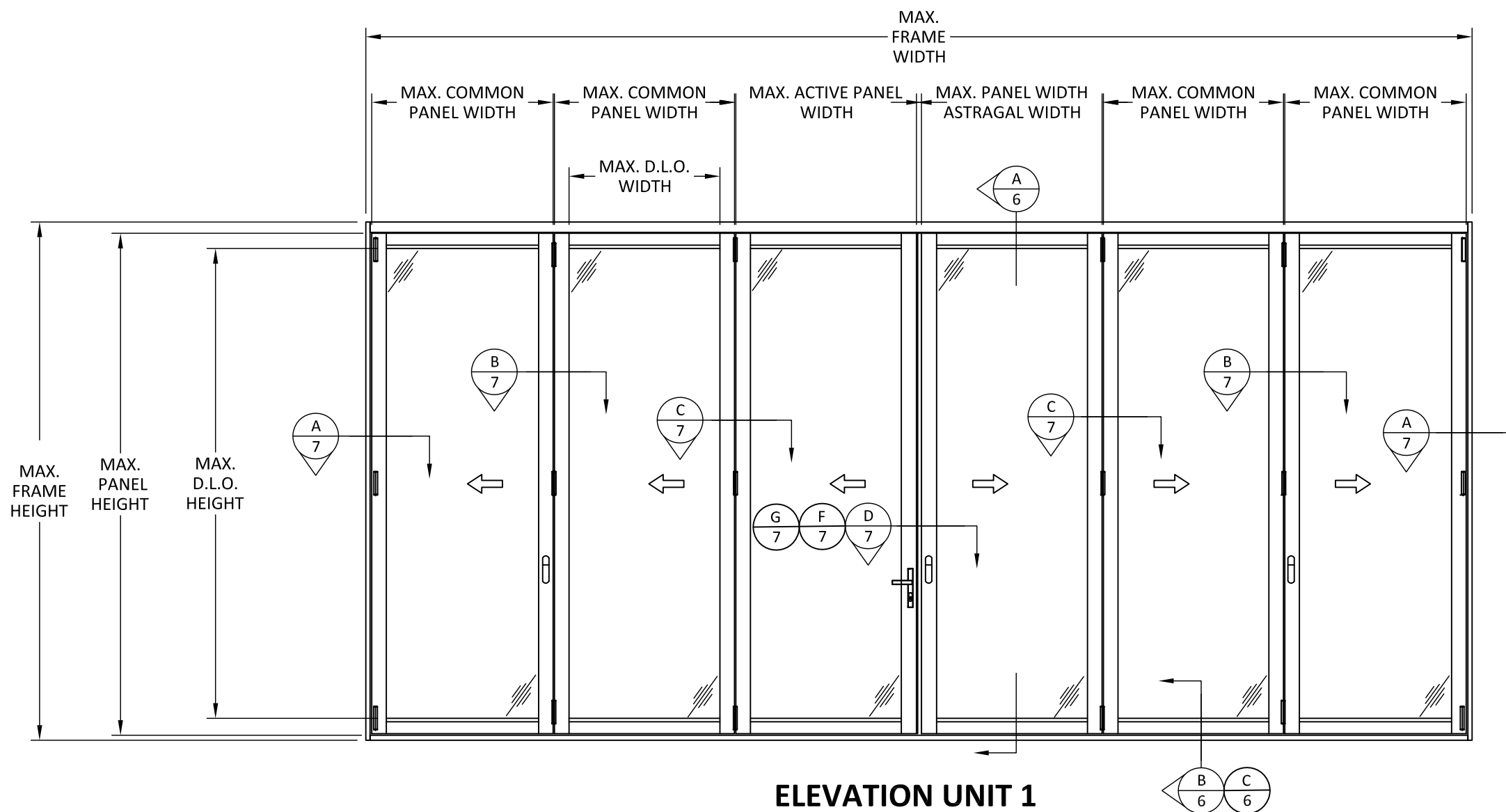
| REMARKS           | BY | DATE  |
|-------------------|----|-------|
| 2023 CODE CHANGE  | MG | 02/23 |
| COMPANY NAME UPD. | SH | 09/23 |
| DP TABLE UPDATES  | SH | 12/23 |
| CONFIG UPDATE     | DI | 06/24 |

THE INSTALLATION DETAILS DESCRIBED HEREIN ARE GENERIC AND MAY NOT REFLECT ACTUAL CONDITIONS FOR A SPECIFIC SITE. IF SITE CONDITIONS CAUSE INSTALLATION TO DEVIATE FROM THE REQUIREMENTS DETAILED HEREIN, A LICENSED ENGINEER OR ARCHITECT SHALL PREPARE SITE SPECIFIC DOCUMENTS FOR USE WITH THIS DOCUMENT.



|          |          |
|----------|----------|
| FL #:    | FL27023  |
| DATE:    | 04.06.18 |
| DWG. BY: | HR       |
| CHK. BY: | HFN      |
| SCALE:   | NTS      |
| DWG. #:  | EWS008   |
| SHEET:   | 1 OF 8   |

c:\users\dylanwata\building drops, inc\building drops landing - common\projects\euro-wall, llc\fbcc-24-0531 - fbc submittal - multi directional panel revision - 127023 euro c5 folding door system\dwg\27023.2\ews008.dwg 6/11/2024 9:00 AM



**NOTE:**  
PANELS SHOWN ARE BASED ON TESTING, OTHER APPROVED CONFIGURATIONS ARE AS FOLLOWS:

1. 1 PANEL - 1L, 1R
2. 2 PANEL - 2L, 2R, 1L 1R
3. 3 PANEL - 3L, 3R, 2L 1R, 1L 2R
4. 4 PANEL - 4L, 4R, 3L 1R, 1L 3R, 2L 2R
5. 5 PANEL - 5L, 5R, 4L 1R, 1L 4R, 3L 2R, 2L 3R
6. 6 PANEL - 6L, 6R, 5L 1R, 1L 5R 4L 2R, 2L 4R, 3L 3R,
7. 7 PANEL - 7L, 7R, 6L-1R, 1L-6R, 5L-2R, 2L-5R, 4L-3R, 3L-4R
8. 8 PANEL - 8L, 8R, 7L-1R, 1L-7R, 6L-2R, 2L-6R, 5L-3R, 3L-5R, 4L-4R

INDIVIDUAL PANEL HEIGHT AND WIDTH SHALL NOT EXCEED THE HEIGHT AND WIDTH OF THE DIMENSIONS SHOWN ON SHEET 4.

**NOTE:**  
SEE SHEET 4 FOR AVAILABLE SIZES AND DESIGN PRESSURES.

TITLE:  
EURO C5 OUT FOLDING DOOR SYSTEM  
(NON-HVHZ) (NON-IMPACT)

ELEVATION UNIT 1

PREPARED BY:

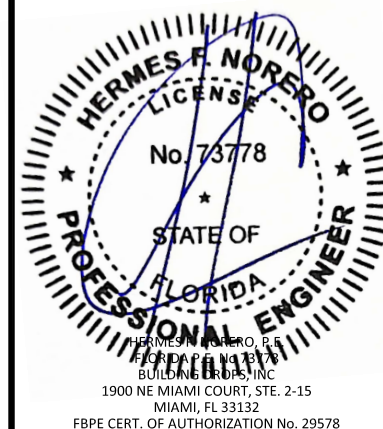
BUILDING DROPS, INC.

1900 NE MIAMI COURT, STE. 2-15  
MIAMI, FL 33132  
PH: (954)399-8478  
FAX: (954)744-4738  
WEB: www.buildingdrops.com



| REMARKS           | BY | DATE  |
|-------------------|----|-------|
| 2023 CODE CHANGE  | MG | 02/23 |
| COMPANY NAME UPD. | SH | 09/23 |
| DP TABLE UPDATES  | SH | 12/23 |
| CONFIG UPDATE     | DI | 06/24 |

THE INSTALLATION DETAILS DESCRIBED HEREIN ARE GENERIC AND MAY NOT REFLECT ACTUAL CONDITIONS FOR A SPECIFIC SITE. IF SITE CONDITIONS CAUSE INSTALLATION TO DEVIATE FROM THE REQUIREMENTS DETAILED HEREIN, A LICENSED ENGINEER OR ARCHITECT SHALL PREPARE SITE SPECIFIC DOCUMENTS FOR USE WITH THIS DOCUMENT.



FL #:  
**FL27023**

DATE: **04.06.18**

DWG. BY: **HR** CHK. BY: **HFN**

SCALE: **NTS**

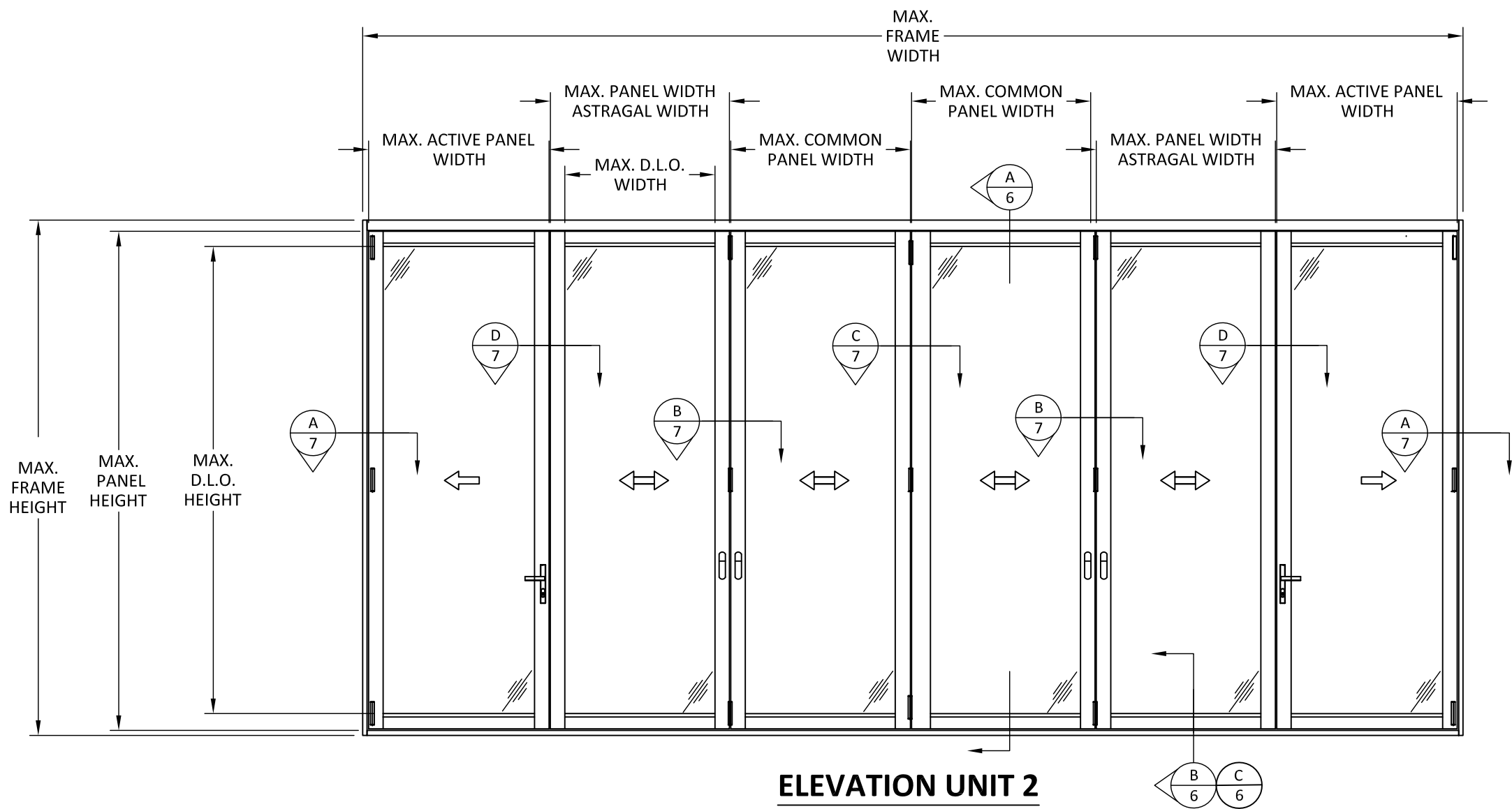
DWG. #: **EWS008**

SHEET:

**2**

OF 8

c:\users\dylanwata\building drops, inc\building drops landing - common\projects\euro-wall, llc\fbcc-24-0531 - fbc submittal - multi directional panel revision - 127023 euro c5 folding door system\dwg\27023.2\ews008.dwg 6/11/2024 9:00 AM



ELEVATION UNIT 2

**NOTE:**  
PANELS SHOWN ARE BASED ON TESTING, OTHER APPROVED CONFIGURATIONS ARE AS FOLLOWS:  
3 PANEL - 1L 2LR, 2LR 1R  
4 PANEL - 1L 2LR 1R  
5 PANEL - 1L 4LR, 4LR 1R  
6 PANEL - 1L 4LR 1R  
7 PANEL - 1L 6LR, 6LR 1R  
8 PANEL - 1L 6LR 1R  
9 PANEL - 1L 8LR, 8LR 1R

INDIVIDUAL PANEL HEIGHT AND WIDTH SHALL NOT EXCEED THE HEIGHT AND WIDTH OF THE DIMENSIONS SHOWN ON SHEET 4.

**NOTE:**  
SEE SHEET 4 FOR AVAILABLE SIZES AND DESIGN PRESSURES.



EURO-WALL, LLC  
P.O. BOX 8007  
NORTH PORT, FL 34290  
PH: 888-989-3876

TITLE:  
EURO C5 OUT FOLDING DOOR SYSTEM  
(NON-HVHZ) (NON-IMPACT)

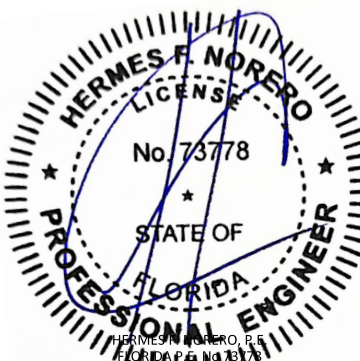
ELEVATION UNIT 2

PREPARED BY:  
BUILDING DROPS, INC.  
1900 NE MIAMI COURT, STE. 2-15  
MIAMI, FL 33132  
PH: (954)399-8478  
FAX: (954)744-4738  
WEB: www.buildingdrops.com

  
BUILDING DROPS

| REMARKS           | BY | DATE  |
|-------------------|----|-------|
| 2023 CODE CHANGE  | MG | 02/23 |
| COMPANY NAME UPD. | SH | 09/23 |
| DP TABLE UPDATES  | SH | 12/23 |
| CONFIG UPDATE     | DI | 06/24 |

THE INSTALLATION DETAILS DESCRIBED HEREIN ARE GENERIC AND MAY NOT REFLECT ACTUAL CONDITIONS FOR A SPECIFIC SITE. IF SITE CONDITIONS CAUSE INSTALLATION TO DEVIATE FROM THE REQUIREMENTS DETAILED HEREIN, A LICENSED ENGINEER OR ARCHITECT SHALL PREPARE SITE SPECIFIC DOCUMENTS FOR USE WITH THIS DOCUMENT.



HERMES F. NORERO  
LICENSE  
No. 73778  
STATE OF  
FLORIDA  
PROFESSIONAL ENGINEER

HERMES F. NORERO, P.E.  
BUILDING DROPS, INC.  
1900 NE MIAMI COURT, STE. 2-15  
MIAMI, FL 33132  
FBPE CERT. OF AUTHORIZATION No. 29578

FL #:

FL27023

DATE:

04.06.18

DWG. BY:

HR

CHK. BY:

HFN

SCALE:

NTS

DWG. #:

EWS008

SHEET:

3

OF 8


c:\users\dylanwata\building drops, inc\building drops landing - common\projects\euro-wall, llc\fbcc-24-0531 - fbc submittal - multi directional panel revision - f127023 euro c5 folding door system\dwgs\27023.2\ews008.dwg 6/11/2024 9:00 AM

# DESIGN PRESSURE TABLE

| DESIGN PRESSURE TABLE (+/- PSF) |                              |      |      |      |      |      |      |      |      |      |      |      |      |
|---------------------------------|------------------------------|------|------|------|------|------|------|------|------|------|------|------|------|
| PANEL HEIGHT (INCHES)           | NOMINAL PANEL WIDTH (INCHES) |      |      |      |      |      |      |      |      |      |      |      |      |
|                                 |                              | 26   | 30   | 34   | 36   | 38   | 39   | 42   | 45   | 46   | 48   | 50   | 54   |
|                                 | 72                           | 50.0 | 50.0 | 50.0 | 50.0 | 50.0 | 50.0 | 50.0 | 46.7 | 45.7 | 43.8 | 42.0 | 38.9 |
|                                 | 78                           | 50.0 | 50.0 | 50.0 | 50.0 | 50.0 | 50.0 | 50.0 | 46.7 | 45.7 | 43.8 | 42.0 | 38.9 |
|                                 | 84                           | 50.0 | 50.0 | 50.0 | 50.0 | 50.0 | 50.0 | 50.0 | 46.7 | 45.7 | 43.8 | 42.0 | 38.9 |
|                                 | 90                           | 50.0 | 50.0 | 50.0 | 50.0 | 50.0 | 50.0 | 50.0 | 46.7 | 45.7 | 43.8 | 42.0 | 38.9 |
|                                 | 91                           | 50.0 | 50.0 | 50.0 | 50.0 | 50.0 | 50.0 | 50.0 | 46.7 | 45.7 | 43.8 | 42.0 | 38.9 |
|                                 | 96                           | 50.0 | 50.0 | 50.0 | 50.0 | 50.0 | 50.0 | 50.0 | 46.7 | 45.7 | 43.8 | 42.0 | 38.9 |
|                                 | 97                           | 50.0 | 50.0 | 50.0 | 50.0 | 50.0 | 50.0 | 50.0 | 46.7 | 45.7 | 43.8 | 42.0 | 38.9 |
|                                 | 102                          | 50.0 | 50.0 | 50.0 | 50.0 | 50.0 | 50.0 | 50.0 | 46.7 | 45.7 | 43.8 | 42.0 | 38.9 |
|                                 | 103                          | 50.0 | 50.0 | 50.0 | 50.0 | 50.0 | 50.0 | 50.0 | 46.7 | 45.7 | 43.8 | 42.0 | 38.9 |
|                                 | 108                          | 50.0 | 50.0 | 50.0 | 50.0 | 50.0 | 50.0 | 50.0 | 46.7 | 45.7 | 43.8 | 42.0 | -    |
|                                 | 109                          | 50.0 | 50.0 | 50.0 | 50.0 | 50.0 | 50.0 | 50.0 | 46.7 | 45.7 | 43.8 | 42.0 | -    |
|                                 | 114                          | 50.0 | 50.0 | 50.0 | 50.0 | 50.0 | 50.0 | 50.0 | 46.7 | 45.7 | -    | -    | -    |
|                                 | 115                          | 50.0 | 50.0 | 50.0 | 50.0 | 50.0 | 50.0 | 50.0 | 46.7 | 45.7 | -    | -    | -    |
|                                 | 120                          | 50.0 | 50.0 | 50.0 | 50.0 | 48.2 | 47.0 | 44.0 | 41.4 | 40.6 | -    | -    | -    |
|                                 | 121                          | 50.0 | 50.0 | 50.0 | 49.4 | 47.0 | 45.9 | 42.9 | 40.3 | 39.5 | -    | -    | -    |
|                                 | 126                          | 50.0 | 50.0 | 46.0 | 43.6 | 41.5 | 40.5 | 37.8 | -    | -    | -    | -    | -    |
|                                 | 127                          | 50.0 | 50.0 | 44.9 | 42.6 | 40.5 | 39.5 | 36.9 | -    | -    | -    | -    | -    |
|                                 | 132                          | 50.0 | 45.0 | 39.9 | 37.8 | 35.9 | 35.1 | 32.8 | -    | -    | -    | -    | -    |
|                                 | 133                          | 50.0 | 43.9 | 39.0 | 36.9 | 35.1 | 34.3 | 32.0 | -    | -    | -    | -    | -    |
|                                 | 138                          | 45.1 | 39.3 | 34.8 | 33.0 | 31.4 | -    | -    | -    | -    | -    | -    | -    |
|                                 | 139                          | 44.1 | 38.4 | 34.1 | 32.3 | 30.7 | -    | -    | -    | -    | -    | -    | -    |
|                                 | 144                          | 39.6 | 34.5 | 30.6 | 29.0 | 27.5 | -    | -    | -    | -    | -    | -    | -    |
|                                 | 145                          | 38.8 | 33.8 | 30.0 | 28.4 | 27.0 | -    | -    | -    | -    | -    | -    | -    |
|                                 | 151                          | 34.3 | 29.9 | 26.5 | -    | -    | -    | -    | -    | -    | -    | -    | -    |
|                                 | 157                          | 30.5 | 26.6 | 23.5 | -    | -    | -    | -    | -    | -    | -    | -    | -    |
|                                 | 163                          | 27.3 | 23.7 | 21.0 | -    | -    | -    | -    | -    | -    | -    | -    | -    |
|                                 | 169                          | 24.4 | 21.2 | 18.8 | -    | -    | -    | -    | -    | -    | -    | -    | -    |

NOTE:  
DL.O. HEIGHT = PANEL HEIGHT - 7.09375"  
D.L.O. WIDTH = PANEL WIDTH - 6.4375"

| OUTSWING DOOR<br>WATER TEST PRESSURE |            |                |
|--------------------------------------|------------|----------------|
| PANEL SIZE                           | GLASS TYPE | PRESSURE (PSF) |
| X ≤ 42" X 120"                       | G1         | 7.52           |




EURO-WALL, LLC  
P.O. BOX 8007  
NORTH PORT, FL 34290  
PH: 888-989-3876

TITLE:  
EURO C5 OUT FOLDING DOOR SYSTEM  
(NON-HVHZ) (NON-IMPACT)

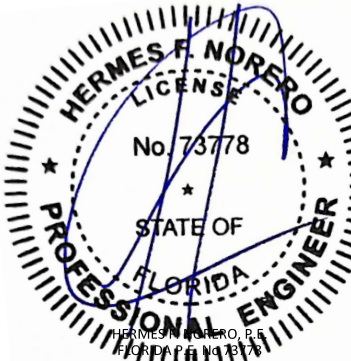
DESIGN PRESSURE TABLE

PREPARED BY:  
BUILDING DROPS, INC.  
1900 NE MIAMI COURT, STE. 2-15  
MIAMI, FL 33132  
PH: (954)399-8478  
FAX: (954)744-4738  
WEB: www.buildingdrops.com



|                   |    |       |
|-------------------|----|-------|
| REMARKS           | BY | DATE  |
| 2023 CODE CHANGE  | MG | 02/23 |
| COMPANY NAME UPD. | SH | 09/23 |
| DP TABLE UPDATES  | SH | 12/23 |
| CONFIG UPDATE     | DI | 06/24 |

THE INSTALLATION DETAILS DESCRIBED HEREIN ARE GENERIC AND MAY NOT REFLECT ACTUAL CONDITIONS FOR A SPECIFIC SITE. IF SITE CONDITIONS CAUSE INSTALLATION TO DEVIATE FROM THE REQUIREMENTS DETAILED HEREIN, A LICENSED ENGINEER OR ARCHITECT SHALL PREPARE SITE SPECIFIC DOCUMENTS FOR USE WITH THIS DOCUMENT.



HERMES F. NORERO, P.E.  
1900 NE MIAMI COURT, STE. 2-15  
MIAMI, FL 33132  
FBPE CERT. OF AUTHORIZATION No. 29578

FL #:

FL27023

DATE: 04.06.18

|                |                 |
|----------------|-----------------|
| DWG. BY:<br>HR | CHK. BY:<br>HFN |
|----------------|-----------------|

SCALE: NTS

DWG. #: EWS008

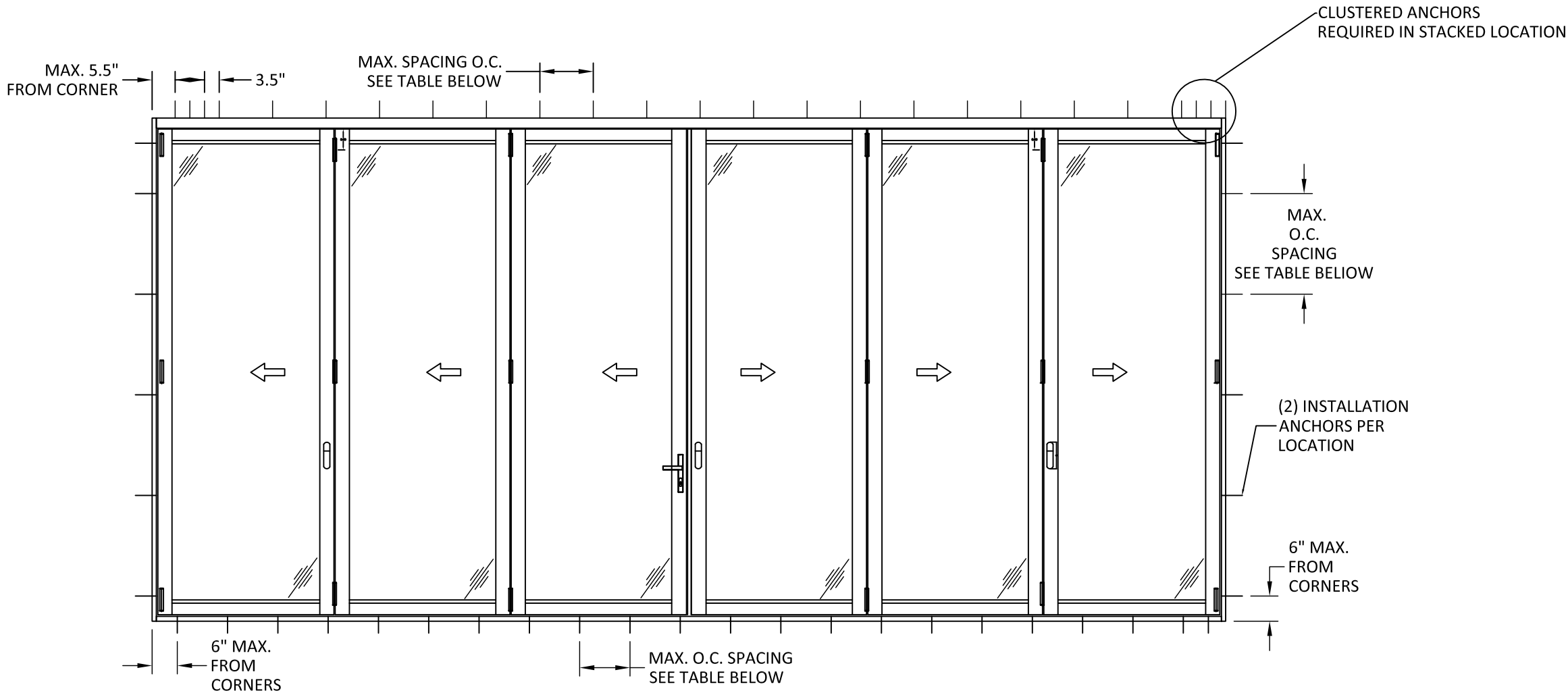
SHEET:

4

OF 8



c:\users\dylanwata\building drops, inc\building drops landing - common\projects\euro-wall, llc\fbcc-24-0531 - fbc submittal - multi directional panel revision - 127023 euro c5 folding door system\dwg\27023.2\ews008.dwg 6/11/2024 9:00 AM



**ANCHOR LAYOUT  
THROUGH FRAME INSTALLATION**

| SUBSTRATE                              | ANCHOR SCHEDULE | MAX. O.C. SPACING AT HEAD | MAX. O.C. SPACING AT SILL | MAX. O.C. SPACING AT JAMBS |
|--|-----------------|---------------------------|---------------------------|----------------------------|
| WOOD: MIN. SG = 0.55                   | #14 WOOD SCREW  | 12"                       | 11.125"                   | 24"                        |
| METAL: 18 GAUGE STEEL, MIN. Fy = 33KSI | 1/4" TEK SCREW  | 12"                       | 12"                       | 24"                        |
| CONCRETE: f'c=3000PSI                  | 1/4" ITW TAPCON | 12"                       | 12"                       | 24"                        |
| MASONRY: CMU PER ASTM C90              | 1/4" ITW TAPCON | 9"                        | 7.625"                    | 24"                        |



EURO-WALL, LLC  
P.O. BOX 8007  
NORTH PORT, FL 34290  
PH: 888-989-3876

TITLE:  
EURO C5 OUT FOLDING DOOR SYSTEM  
(NON-HVHZ) (NON-IMPACT)

ANCHOR LAYOUTS

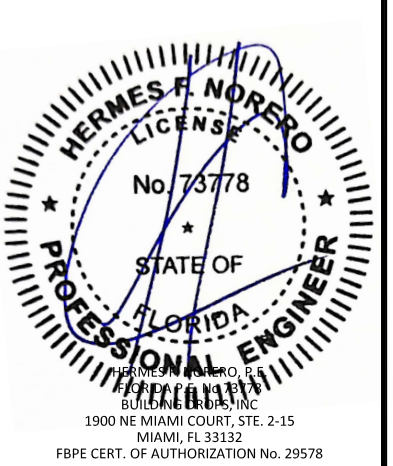
PREPARED BY:

**BUILDING DROPS**

**BUILDING DROPS, INC.**  
1900 NE MIAMI COURT, STE. 2-15  
MIAMI, FL 33132  
PH: (954)399-8478  
FAX: (954)744-4738  
WEB: www.buildingdrops.com

| REMARKS           | BY | DATE  |
|-------------------|----|-------|
| 2023 CODE CHANGE  | MG | 02/23 |
| COMPANY NAME UPD. | SH | 09/23 |
| DP TABLE UPDATES  | SH | 12/23 |
| CONFIG UPDATE     | DI | 06/24 |

THE INSTALLATION DETAILS DESCRIBED HEREIN ARE GENERIC AND MAY NOT REFLECT ACTUAL CONDITIONS FOR A SPECIFIC SITE. IF SITE CONDITIONS CAUSE INSTALLATION TO DEVIATE FROM THE REQUIREMENTS DETAILED HEREIN, A LICENSED ENGINEER OR ARCHITECT SHALL PREPARE SITE SPECIFIC DOCUMENTS FOR USE WITH THIS DOCUMENT.



FL #:  
**FL27023**

DATE: **04.06.18**

DWG. BY:  
**HR**

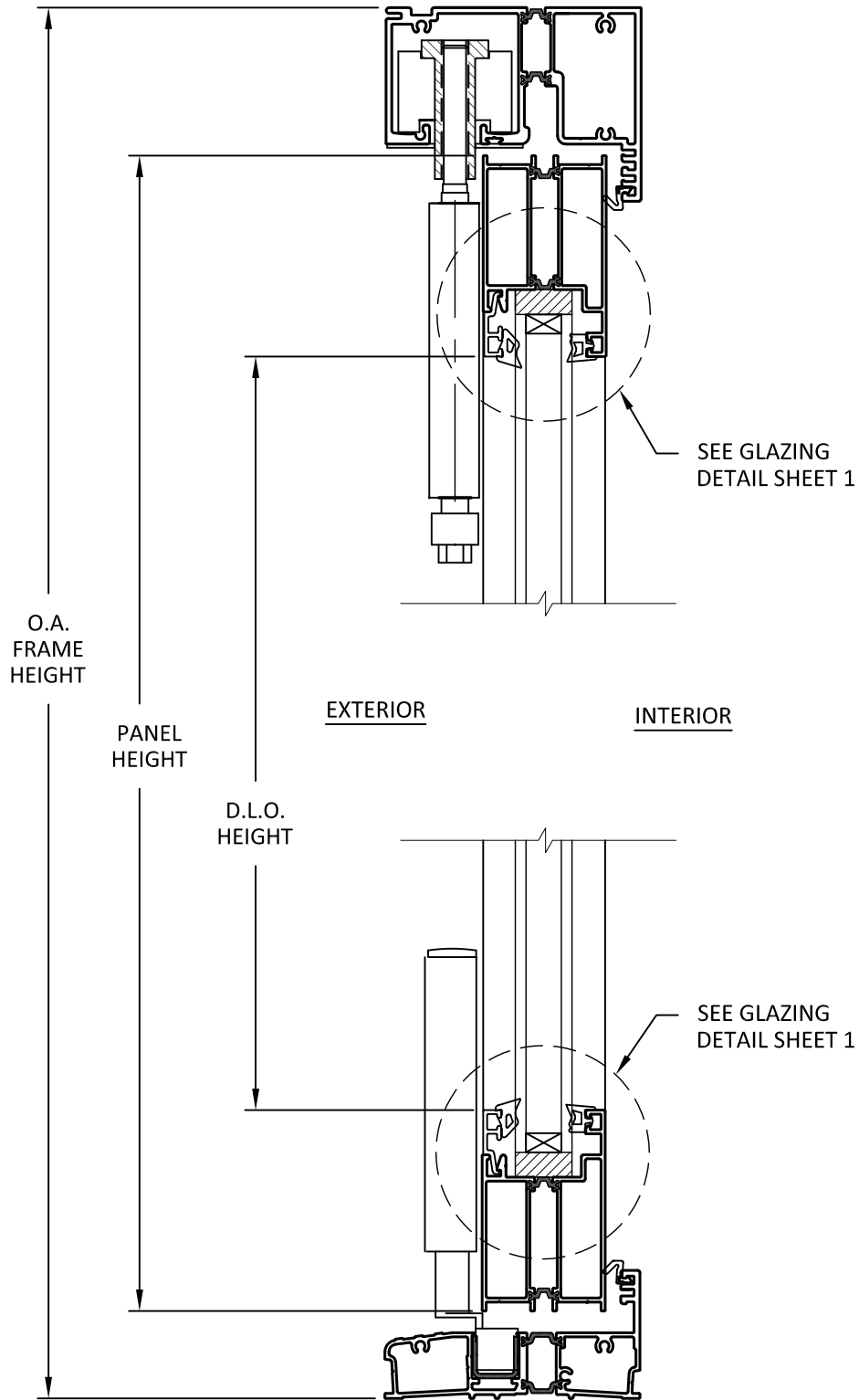
CHK. BY:  
**HFN**

SCALE: **NTS**

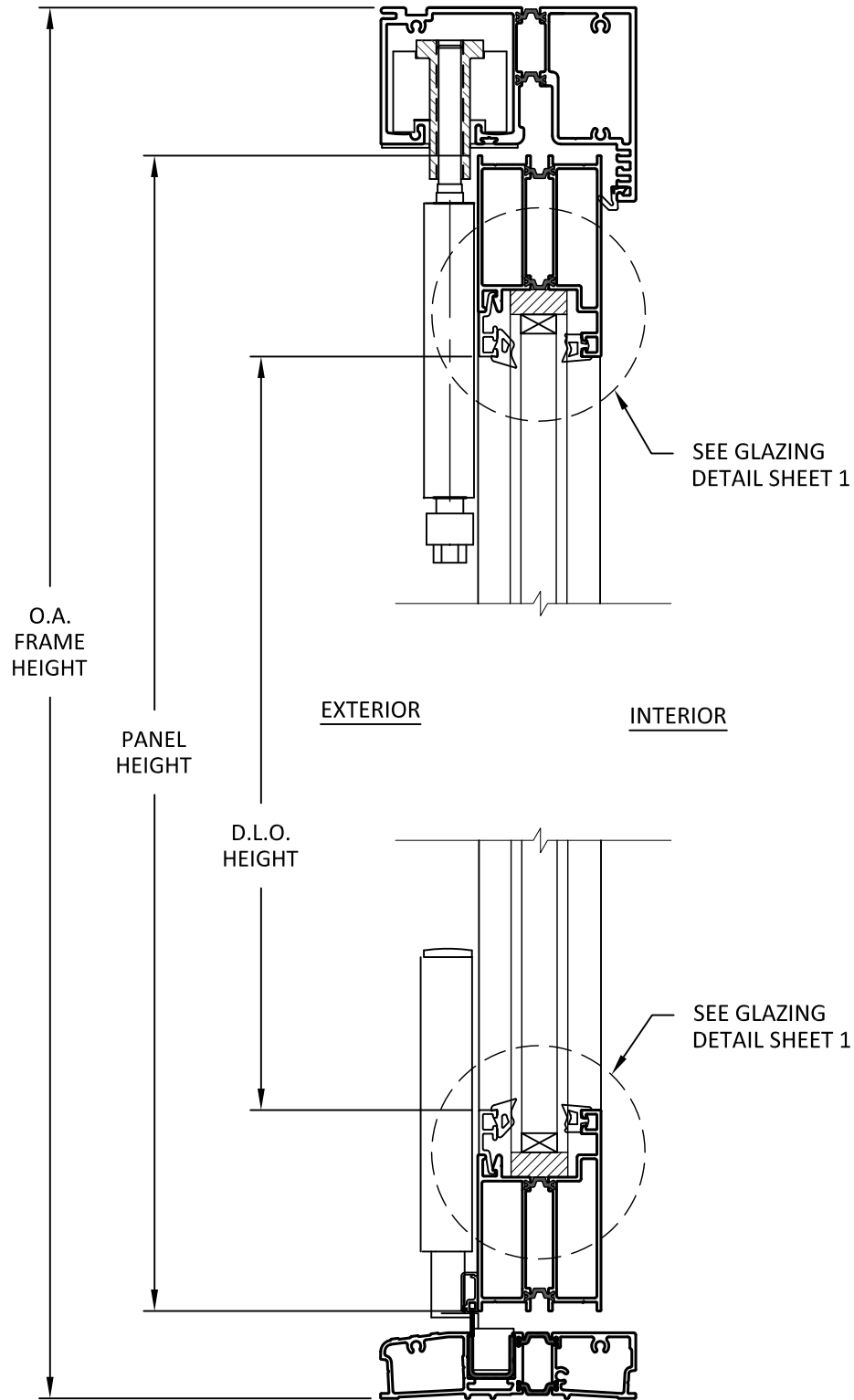
DWG. #: **EWS008**

SHEET:  
**5**  
OF 8

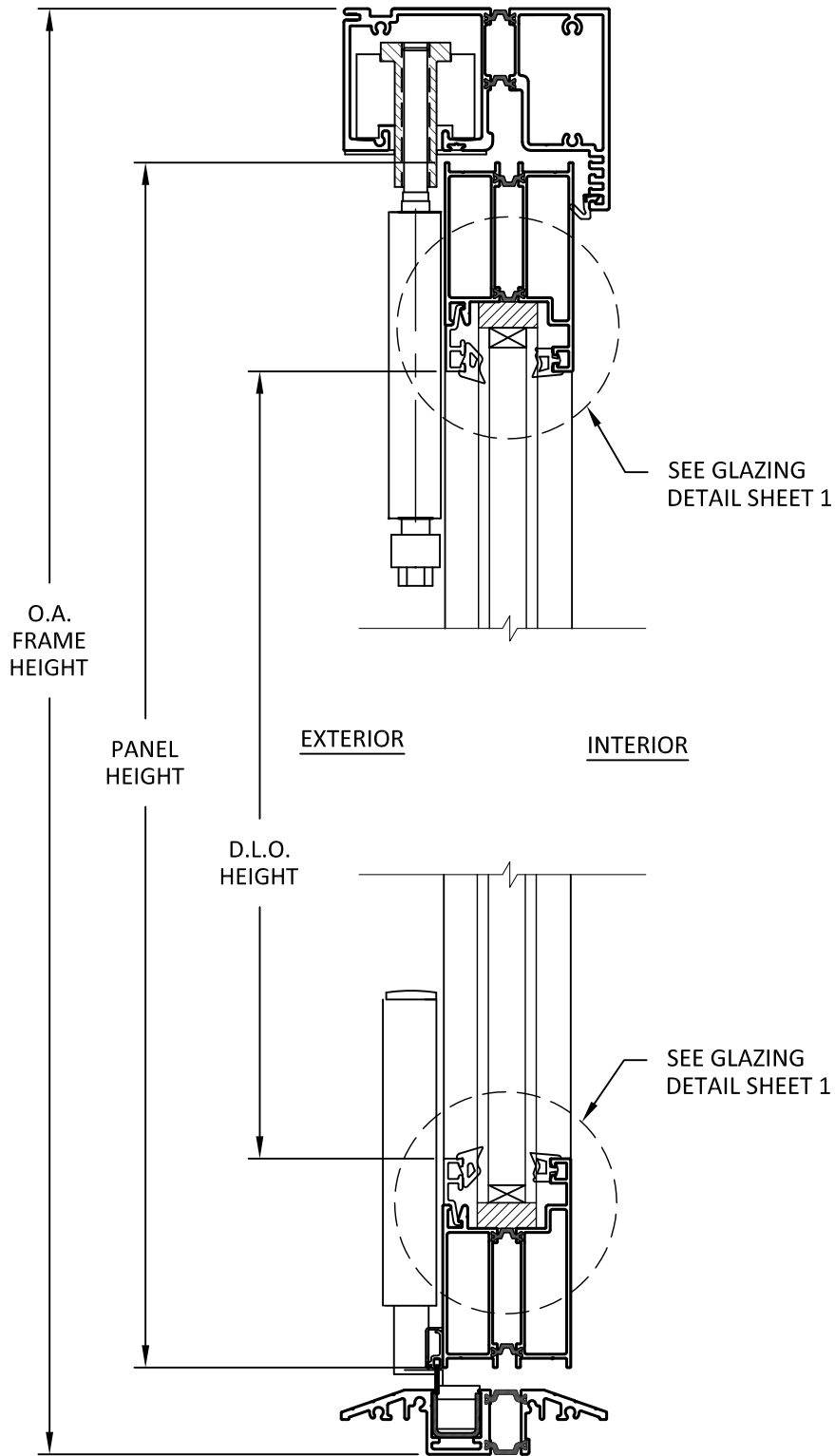
c:\users\dylanwata\building drops, inc\building drops landing - common\projects\euro-wall, llc\fbcc-24-0531 - fbc submittal - multi directional panel revision - 127023 euro c5 folding door system\dwg\27023.2\ews008.dwg 6/11/2024 9:00 AM



**A**  
**6** VERTICAL SECTION  
STANDARD SILL - WATER RATED



**B**  
**6** VERTICAL SECTION  
MODIFIED STANDARD SILL - NOT RATED FOR WATER



**C**  
**6** VERTICAL SECTION  
ADA SILL - NOT RATED FOR WATER

TITLE:  
EURO C5 OUT FOLDING DOOR SYSTEM  
(NON-HVHZ) (NON-IMPACT)

VERTICAL SECTIONS

PREPARED BY:

BUILDING DROPS, INC.

1900 NE MIAMI COURT, STE. 2-15  
MIAMI, FL 33132  
PH: (954)399-8478  
FAX: (954)744-4738  
WEB: www.buildingdrops.com



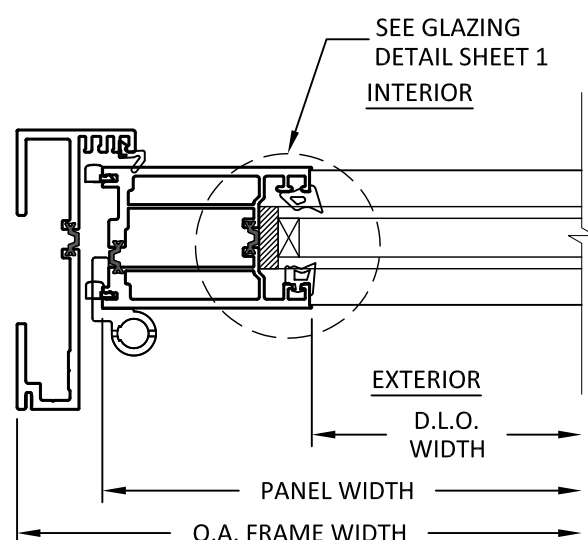
| REMARKS           | BY | DATE  |
|-------------------|----|-------|
| 2023 CODE CHANGE  | MG | 02/23 |
| COMPANY NAME UPD. | SH | 09/23 |
| DP TABLE UPDATES  | SH | 12/23 |
| CONFIG UPDATE     | DI | 06/24 |

THE INSTALLATION DETAILS DESCRIBED HEREIN ARE GENERIC AND MAY NOT REFLECT ACTUAL CONDITIONS FOR A SPECIFIC SITE. IF SITE CONDITIONS CAUSE INSTALLATION TO DEVIATE FROM THE REQUIREMENTS DETAILED HEREIN, A LICENSED ENGINEER OR ARCHITECT SHALL PREPARE SITE SPECIFIC DOCUMENTS FOR USE WITH THIS DOCUMENT.

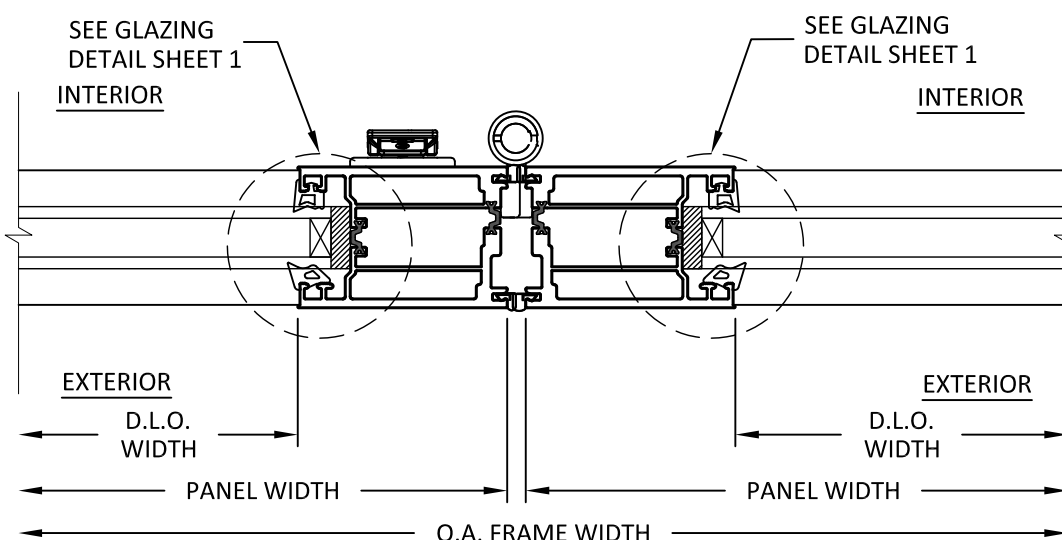


|          |          |
|----------|----------|
| FL #:    | FL27023  |
| DATE:    | 04.06.18 |
| DWG. BY: | HR       |
| CHK. BY: | HFN      |
| SCALE:   | NTS      |
| DWG. #:  | EWS008   |
| SHEET:   |          |

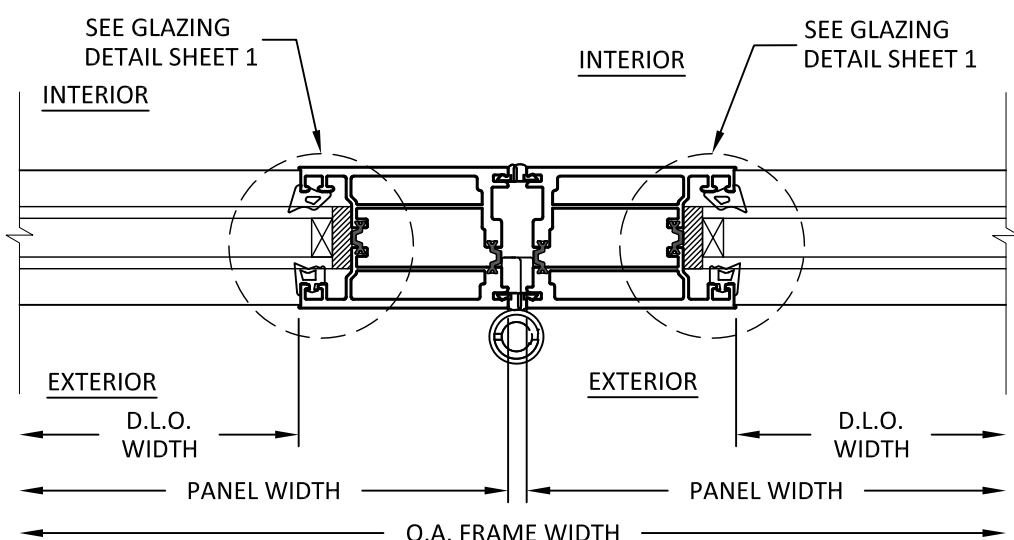
c:\users\dylanwata\building drops, inc\building drops landing - common\projects\euro-wall, llc\fbcc-24-0531 - fbc submittal - multi directional panel revision - 1127023 euro c5 folding door system\dwg\27023.2\ews008.dwg 6/11/2024 9:00 AM



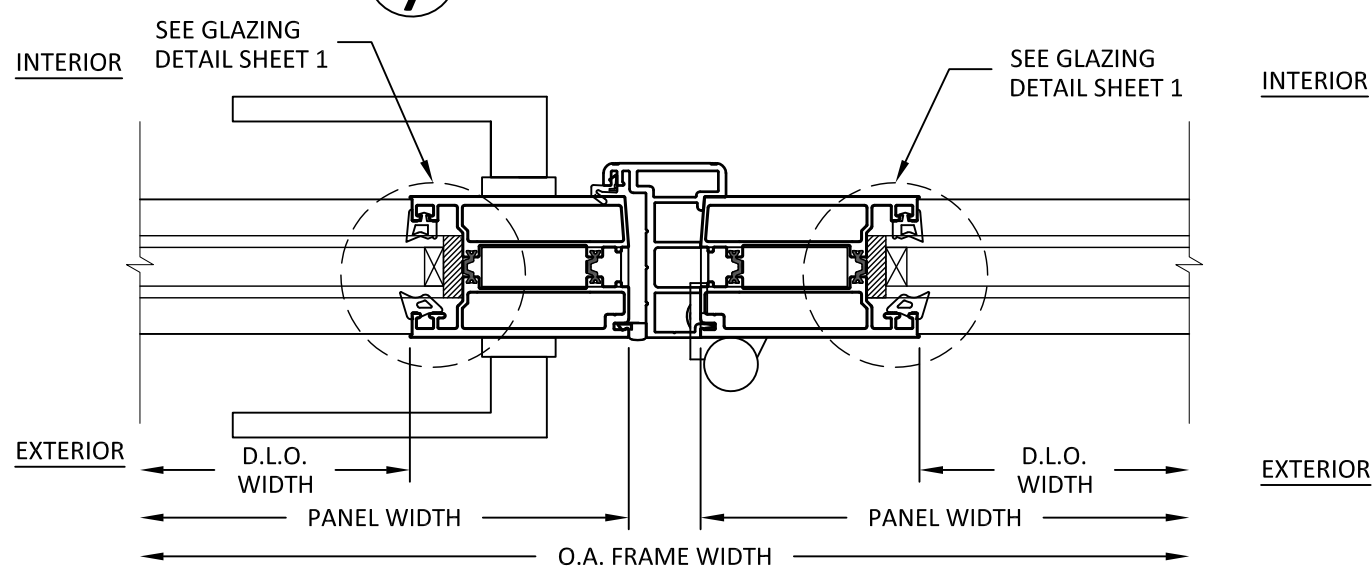
**A**  
**7**  
**HORIZONTAL SECTION**  
JAMB DETAIL



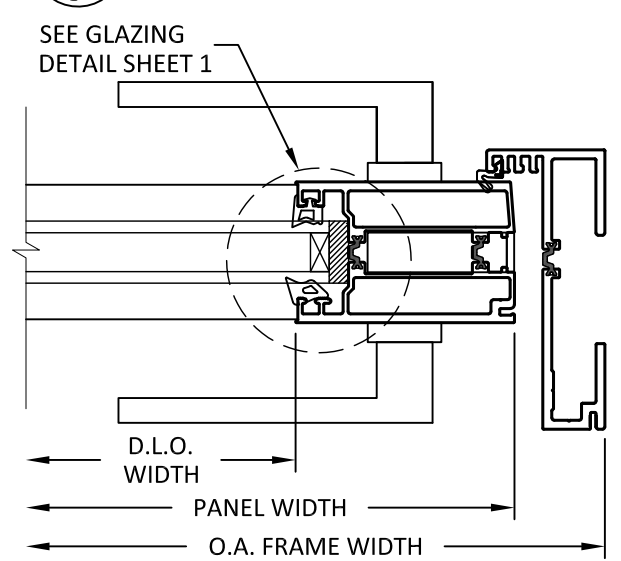
**B**  
**7**  
**HORIZONTAL SECTION**  
PANEL TO PANEL DETAIL



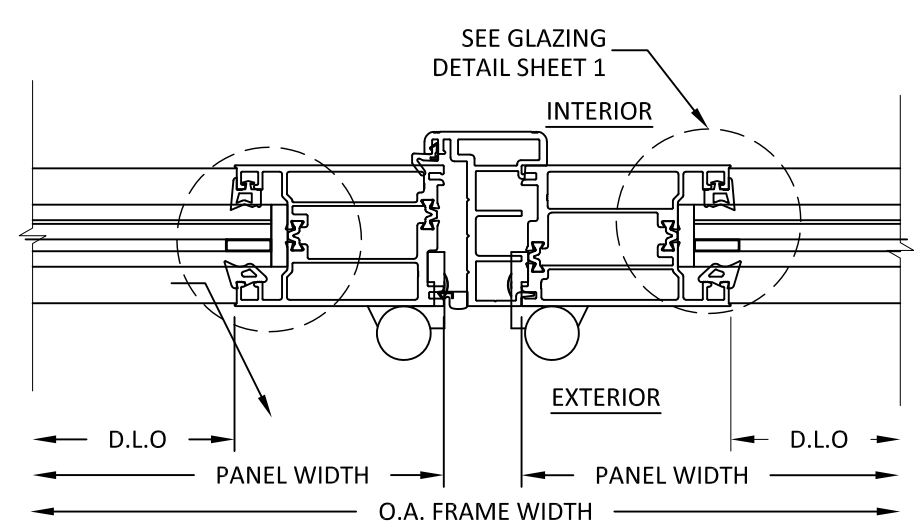
**C**  
**7**  
**HORIZONTAL SECTION**  
PANEL TO PANEL DETAIL



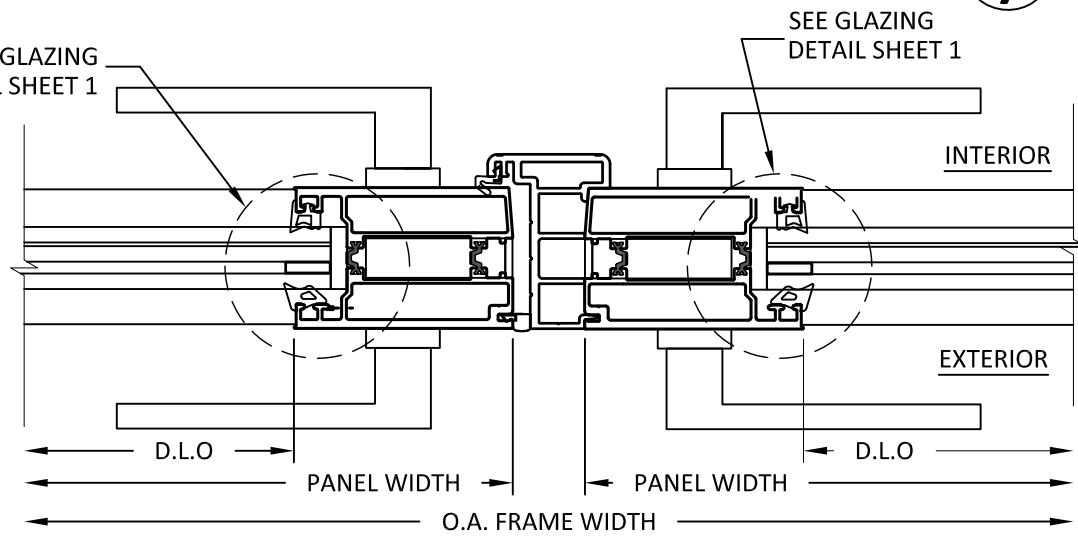
**D**  
**7**  
**HORIZONTAL SECTION**  
DOOR HANDLE DETAIL



**E**  
**7**  
**HORIZONTAL SECTION**  
JAMB DETAIL WITH HANDLE



**F**  
**7**  
**HORIZONTAL SECTION**  
PANEL TO PANEL DETAIL/ OUTSWING



**G**  
**7**  
**HORIZONTAL SECTION**  
DOOR HANDLE DETAIL/ OUTSWING

NOTE:  
1. DETAIL E/7 IS APPLICABLE FOR CONFIGURATIONS LISTED ON SHEET 2 WHERE FREE PANELS LOCK TO THE JAMB.

euro-wall  
SUPERIOR BY DESIGN

EURO-WALL, LLC  
P.O. BOX 8007  
NORTH PORT, FL 34290  
PH: 888-989-3876

TITLE:  
EURO C5 OUT FOLDING DOOR SYSTEM  
(NON-HVHZ) (NON-IMPACT)

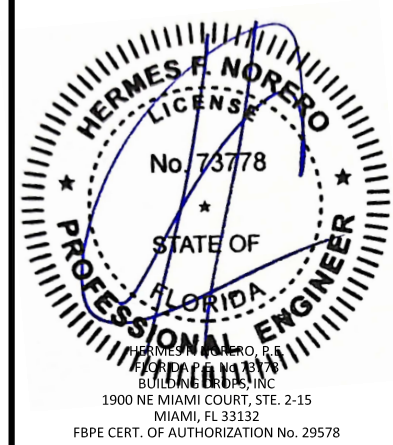
HORIZONTAL SECTIONS

PREPARED BY:  
BUILDING DROPS, INC.  
1900 NE MIAMI COURT, STE. 2-15  
MIAMI, FL 33132  
PH: (954)399-8478  
FAX: (954)744-4738  
WEB: www.buildingdrops.com



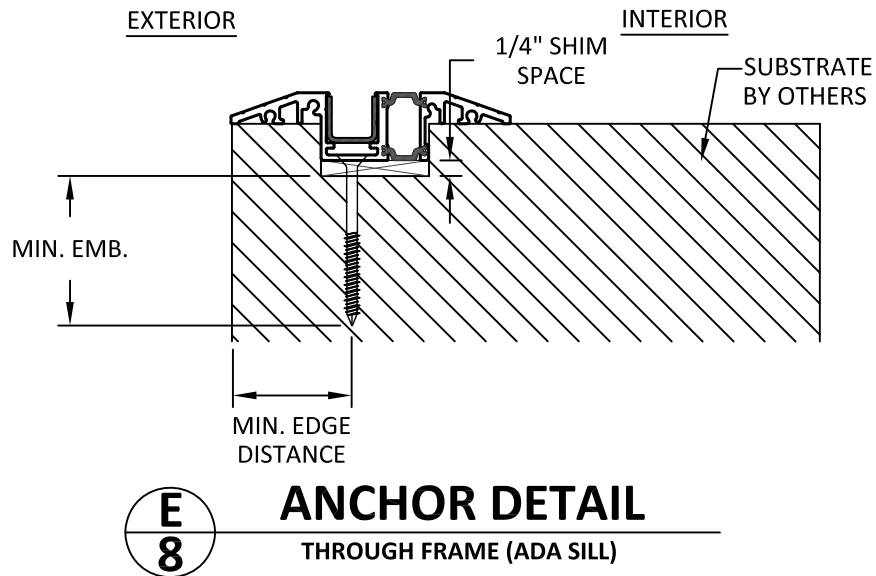
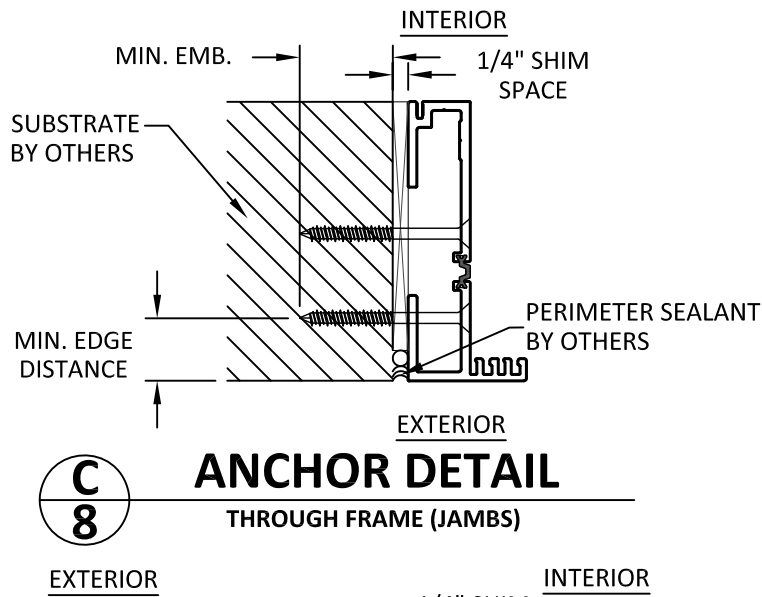
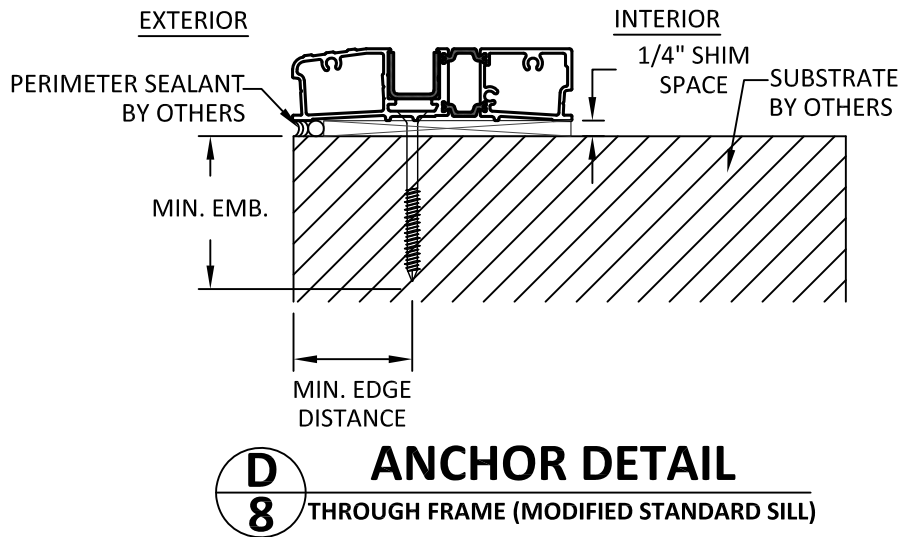
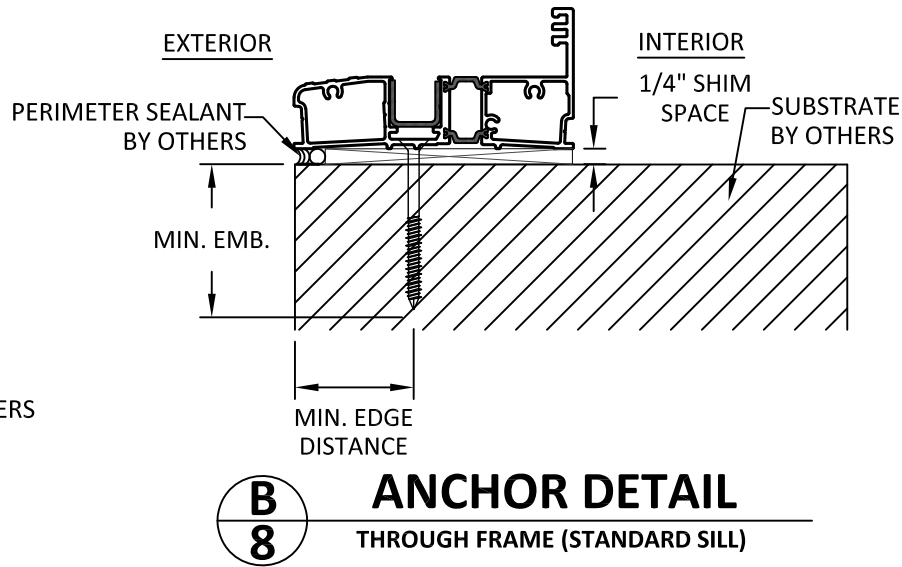
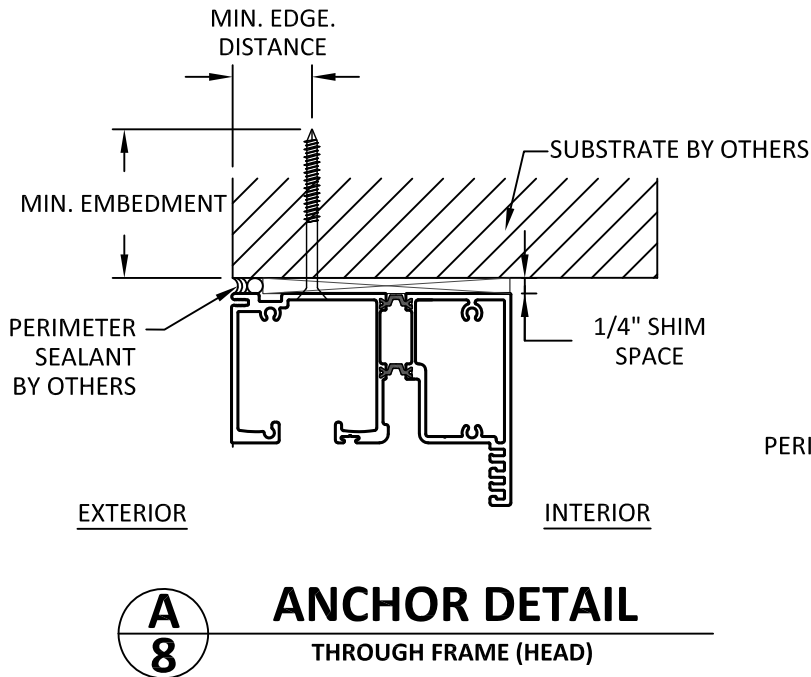
| REMARKS           | BY | DATE  |
|-------------------|----|-------|
| 2023 CODE CHANGE  | MG | 02/23 |
| COMPANY NAME UPD. | SH | 09/23 |
| DP TABLE UPDATES  | SH | 12/23 |
| CONFIG UPDATE     | DI | 06/24 |

THE INSTALLATION DETAILS DESCRIBED HEREIN ARE GENERIC AND MAY NOT REFLECT ACTUAL CONDITIONS FOR A SPECIFIC SITE. IF SITE CONDITIONS CAUSE INSTALLATION TO DEVIATE FROM THE REQUIREMENTS DETAILED HEREIN, A LICENSED ENGINEER OR ARCHITECT SHALL PREPARE SITE SPECIFIC DOCUMENTS FOR USE WITH THIS DOCUMENT.



|          |          |
|----------|----------|
| FL #:    | FL27023  |
| DATE:    | 04.06.18 |
| DWG. BY: | HR       |
| CHK. BY: | HFN      |
| SCALE:   | NTS      |
| DWG. #:  | EWS008   |
| SHEET:   | 7        |
|          | OF 8     |

c:\users\dylanwata\building drops, inc\building drops landing - common\projects\euro-wall, llc\fbcc-24-0531 - fbc submittal - multi directional panel revision - 1127023 euro c5 folding door system\dwg\27023.2\ews008.dwg 6/11/2024 9:00 AM



#### INSTALLATION NOTES:

- ONE (1) INSTALLATION ANCHOR IS REQUIRED AT EACH ANCHOR LOCATION SHOWN UNLESS SPECIFIED IN THE ANCHOR SCHEDULE. TWO (2) INSTALLATION ANCHORS AT THE JAMBS.
- OPTIONAL 1X AND 2X WOOD STUDS FOR CONCRETE/CMU INSTALLATION.
- THE NUMBER OF INSTALLATION ANCHORS DEPICTED IS THE MINIMUM NUMBER OF ANCHORS TO BE USED FOR PRODUCT INSTALLATION OF THE MAXIMUM SIZE LISTED.
- INSTALL INDIVIDUAL INSTALLATION ANCHORS WITHIN A TOLERANCE OF  $\pm 1/2$  INCH THE DEPICTED LOCATION & SPACING IN THE ANCHOR LAYOUT DETAILS (I.E., WITHOUT CONSIDERATION OF TOLERANCES). TOLERANCES ARE NOT CUMULATIVE FROM ONE INSTALLATION ANCHOR TO THE NEXT.
- SHIM AS REQUIRED AT EACH INSTALLATION ANCHOR WITH LOAD BEARING SHIM(S). MAXIMUM ALLOWABLE SHIM STACK TO BE 1/4 INCH. SHIM WHERE SPACE OF 1/16 INCH OR GREATER OCCURS. SHIM(S) SHALL BE CONSTRUCTED OF HIGH DENSITY PLASTIC OR BETTER.
- MINIMUM EMBEDMENT AND EDGE DISTANCE EXCLUDE WALL FINISHES, INCLUDING BUT NOT LIMITED TO STUCCO, FOAM, BRICK VENEER, AND SIDING.
- INSTALLATION ANCHORS AND ASSOCIATED HARDWARE MUST BE MADE OF CORROSION RESISTANT MATERIAL OR HAVE A CORROSION RESISTANT COATING.
- FOR HOLLOW BLOCK AND GROUT FILLED BLOCK, DO NOT INSTALL INSTALLATION ANCHORS INTO MORTAR JOINTS. EDGE DISTANCE IS MEASURED FROM FREE EDGE OF BLOCK OR EDGE OF MORTAR JOINT INTO FACE SHELL OF BLOCK.
- INSTALLATION ANCHORS SHALL BE INSTALLED IN ACCORDANCE WITH ANCHOR MANUFACTURER'S INSTALLATION INSTRUCTIONS, AND ANCHORS SHALL NOT BE USED IN SUBSTRATES WITH STRENGTHS LESS THAN THE MINIMUM STRENGTH SPECIFIED BY THE ANCHOR MANUFACTURER.

| ANCHOR SCHEDULE |   |                 |  |                    |
|-----------------|---|-----------------|--|--------------------|
| METHOD          | SUBSTRATE   | ANCHOR TYPE     | MIN. EMBEDMENT                               | MIN. EDGE DISTANCE |
| THROUGH FRAME   | WOOD:<br>MIN. S.G. = 0.55   | #14 WOOD SCREW  | 1.5"   | 0.75"              |
|                 | METAL:<br>STEEL MIN. 18 GAUGE<br>(MIN. Fy = 36 KSI)<br>ALUM. MIN. 1/8" THK.<br>(MIN. 6063-T5) | 1/4" TEK SCREW  | 3 THREADS MIN<br>PENETRATION<br>BEYOND METAL | 0.5"               |
|                 | CONCRETE:<br>MIN. f'c = 3000 psi  | 1/4" ITW TAPCON | 1.75"  | 2.5"               |
|                 | MASONRY:<br>CMU PER ASTM C90<br>MIN. 2000 PSI   | 1/4" ITW TAPCON | 1.75"  | 3"                 |

euro-wall  
SUPERIOR BY DESIGN

EURO-WALL, LLC  
P.O. BOX 8007  
NORTH PORT, FL 34290  
PH: 888-989-3876

TITLE:  
EURO C5 OUT FOLDING DOOR SYSTEM  
(NON-HVHZ) (NON-IMPACT)

INSTALLATION NOTES, ANCHOR  
DETAILS & SCHEDULE

PREPARED BY:

BUILDING DROPS, INC.

1900 NE MIAMI COURT, STE. 2-15  
MIAMI, FL 33132

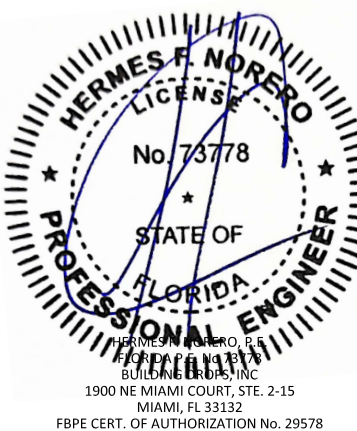
PH: (954)399-8478  
FAX: (954)744-4738

WEB: www.buildingdrops.com



| REMARKS           | BY | DATE  |
|-------------------|----|-------|
| 2023 CODE CHANGE  | MG | 02/23 |
| COMPANY NAME UPD. | SH | 09/23 |
| DP TABLE UPDATES  | SH | 12/23 |
| CONFIG UPDATE     | DI | 06/24 |

THE INSTALLATION DETAILS DESCRIBED HEREIN ARE GENERIC AND MAY NOT REFLECT ACTUAL CONDITIONS FOR A SPECIFIC SITE. IF SITE CONDITIONS CAUSE INSTALLATION TO DEVIATE FROM THE REQUIREMENTS DETAILED HEREIN, A LICENSED ENGINEER OR ARCHITECT SHALL PREPARE SITE SPECIFIC DOCUMENTS FOR USE WITH THIS DOCUMENT.



FL #:  
**FL27023**

DATE: **04.06.18**

DWG. BY: **HR** CHK. BY: **HFN**

SCALE: **NTS**

DWG. #: **EWS008**

SHEET:

8

OF 8